

SKORPIO Keramik Premium

Design: Paolo Cattelan



Product description

Table with base in titanium (GFM11), bronze (GFM18), graphite (GFM69), white (GFM71) or black (GFM73) embossed lacquered steel, Brushed Bronze or Brushed Grey. Top in ceramic Marmi Alabastro (KM02), Supreme (KM03), Ardesia (KM04), matt Golden Calacatta (KM05), glossy Golden Calacatta (KM06), matt Portoro (KM07), glossy Portoro (KM08), glossy Sahara Noir (KM09), Emperador (KM10), Makalu (KM11), Breccia (KM12) or Arenal (KM13) with Brushed Bronze or Brushed Grey lacquered and rounded lower profile. 6cm thick top on 160x160 and 300x128 versions and 5cm on 200x120 and 240x120 versions.

Note

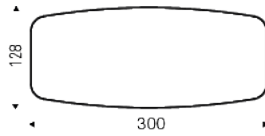
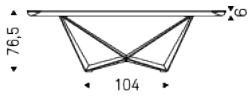
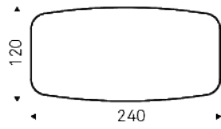
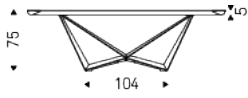
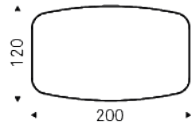
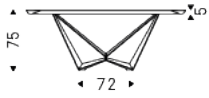
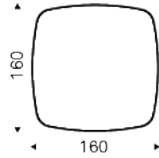
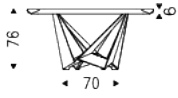
Keramik Premium top, REGISTERED DESIGN



SKORPIO Keramik Premium

Design: Paolo Cattelan

Dimension



SKORPIO Keramik Premium

Design: Paolo Cattelan

Finishes: base

metal



brushed bronze



brushed grey



GFM11 titanium embossed



GFM18 bronze embossed



GFM69 graphite embossed



GFM71 white embossed



GFM73 black embossed

Finishes: top

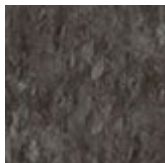
Marmi ceramic



KM02 Alabastro



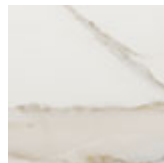
KM03 Supreme



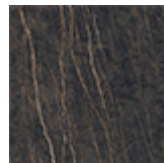
KM04 Ardesia



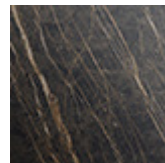
KM05 matt Golden Calacatta



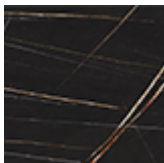
KM06 glossy Golden Calacatta



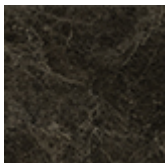
KM07 matt Portoro



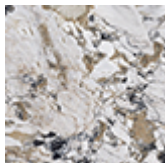
KM08 glossy Portoro



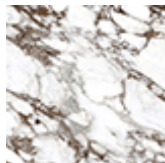
KM09 glossy Sahara Noir



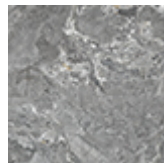
KM10 Emperador



KM11 Makalu



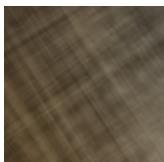
KM12 Breccia



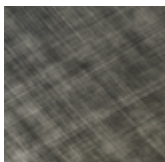
KM13 Arenal

Finishes: profile

wood



brushed bronze



brushed grey